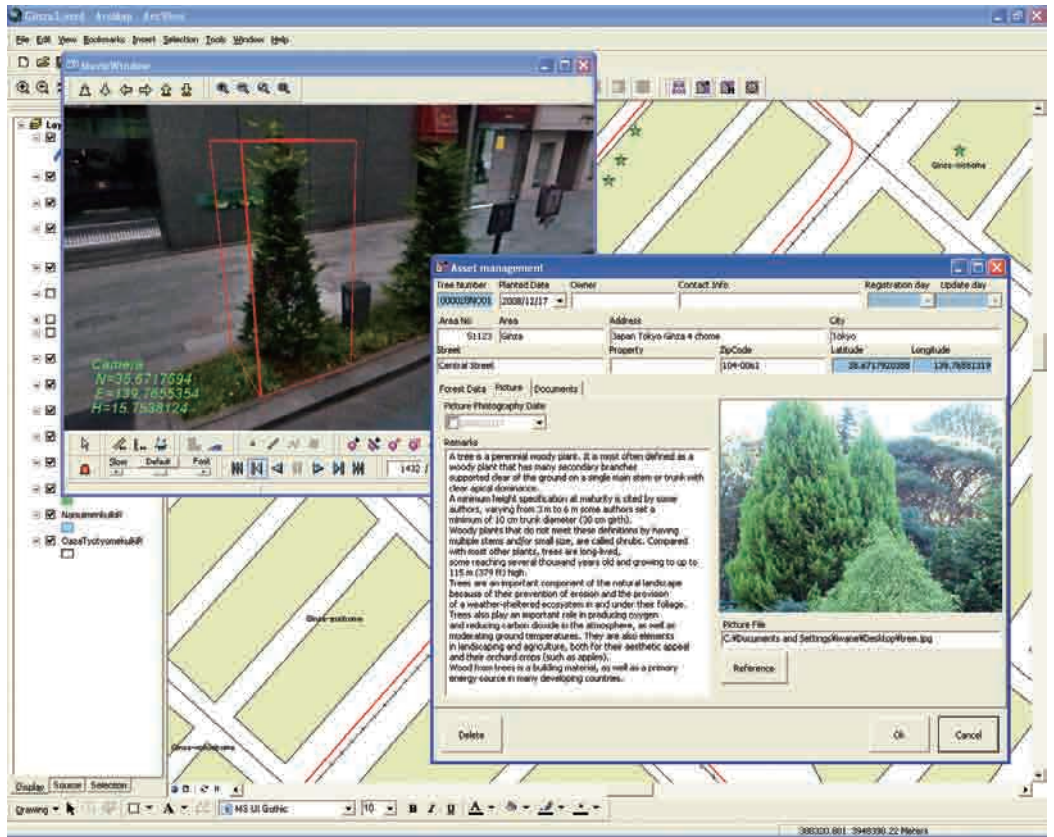




Active Link Vision™ for ArcGIS®

Iwane operates as a 3D, 360-degree video imaging company that offers products related to 3D video geographic information system (GIS) technology, 3D visualization, and autocreation of 3D computer graphics based on camera vector technology. Iwane has released



Active Link Vision (ALV) for ArcGIS®, which runs with ESRI's ArcGIS (specifically ArcMap™). In ALV, 3D geospatial video runs inside the docking window of ArcMap with each frame linked to geographic coordinates. ALV provides real interaction between 2D and 3D environments; users can do measurement, add computer graphics, and tags, and store information in a geodatabase. It is designed to perform asset management, simulation and planning, survey and analysis, situational awareness, and other tasks that cannot be conveniently accomplished with out-of-the-box ArcGIS.



IWANE LABORATORIES, LTD.

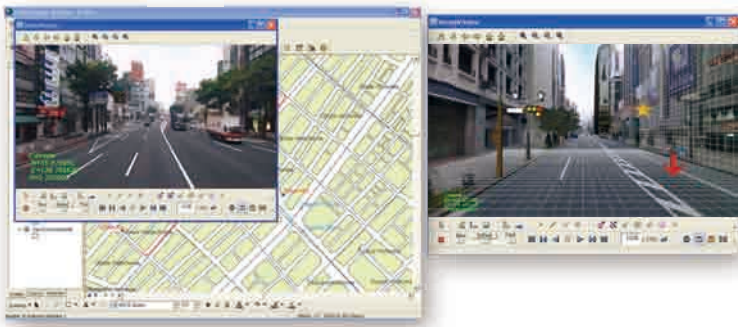
<http://www.iwane.com/en>

sales@iwane.com



3D Video GIS

Visualization and Navigation



3D Geo-spatial Video

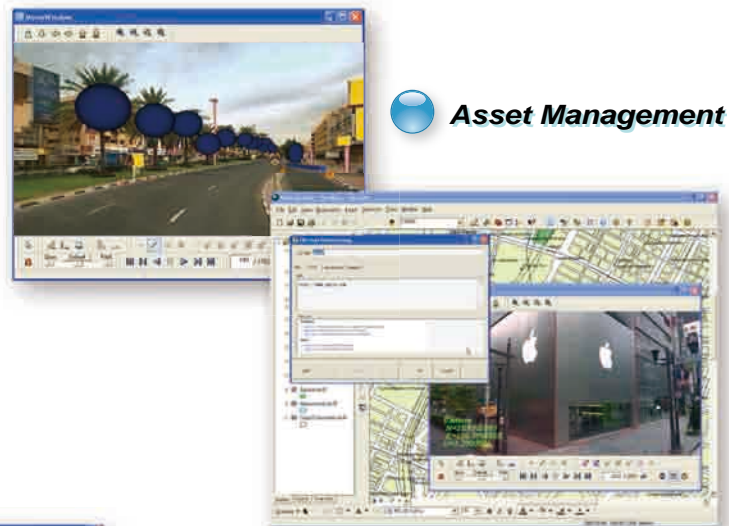


3D Mapping and Measurement



BRING REAL WORLD TO YOUR DESKTOP

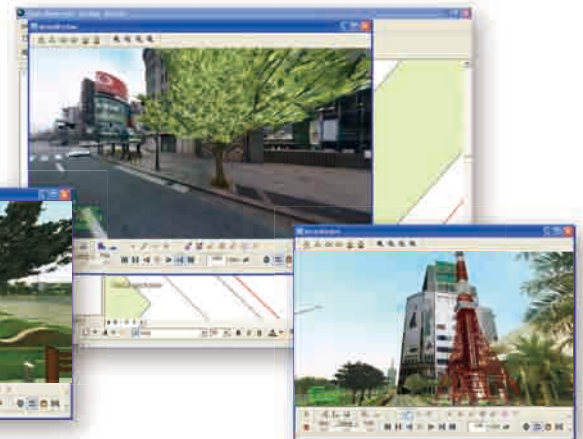
Asset Management



3D CG Composition



Simulation and Planning



Features and Functions

- 2D and 3D interactive platform - Combined with ArcMap
- Visualize the all surrounding Image in 3D docking window with respect to the location on the Map
- Jump to nearest frame and Visualize particular Location
- Getting 3D Coordinates of the arbitrary point
- Drawing of the Geometry feature like Point, Line and Polygon
- 3D Measurement (Linear or Triangular) inside the Video
- Flexibility to import 3DCG inside the Video
- Specification of the real objects inside the Video
- Search for objects on 2D Map and 3D Video respectively
- 2D and 3D Layer Management
- Linkage of any data and attribute with object inside the Video
- Information Mangement of the objects through the extended database system